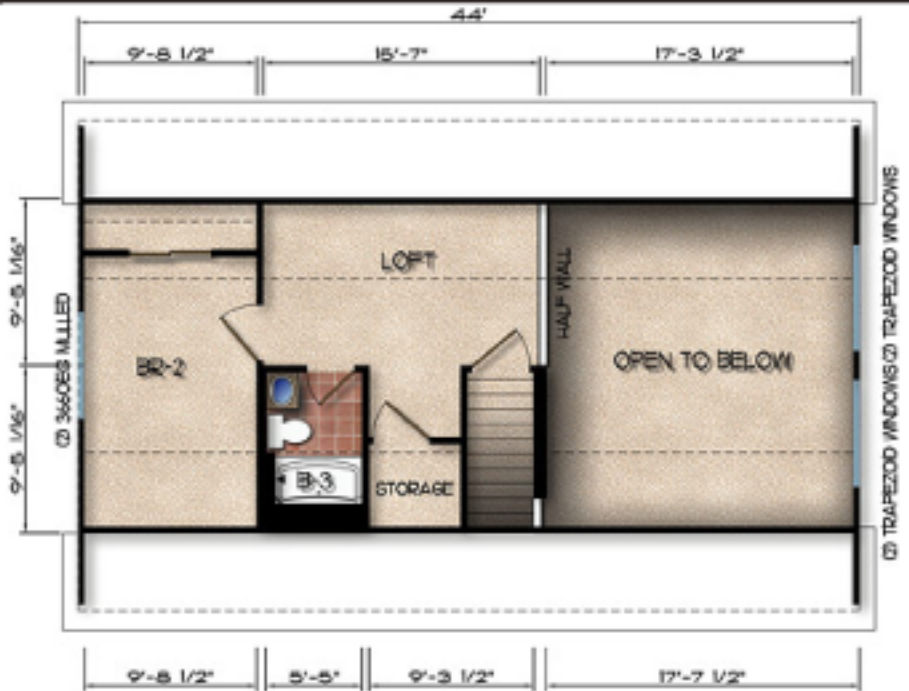
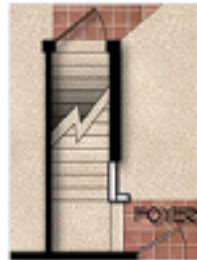


First Floor



Proposed Second Floor



OPT. BASEMENT PLAN



STERLING HOMES
A Division of Forest River Housing, Inc.

S4620

1,215 sq. ft.
Bedrooms: 2
Baths: 2

Due to Sterling Homes continuous product improvement, all prices, specifications and materials are subject to change without notice or obligations.

STERLING HOMES
 Division of Forest River Housing, Inc.

www.housingbysterling.com